

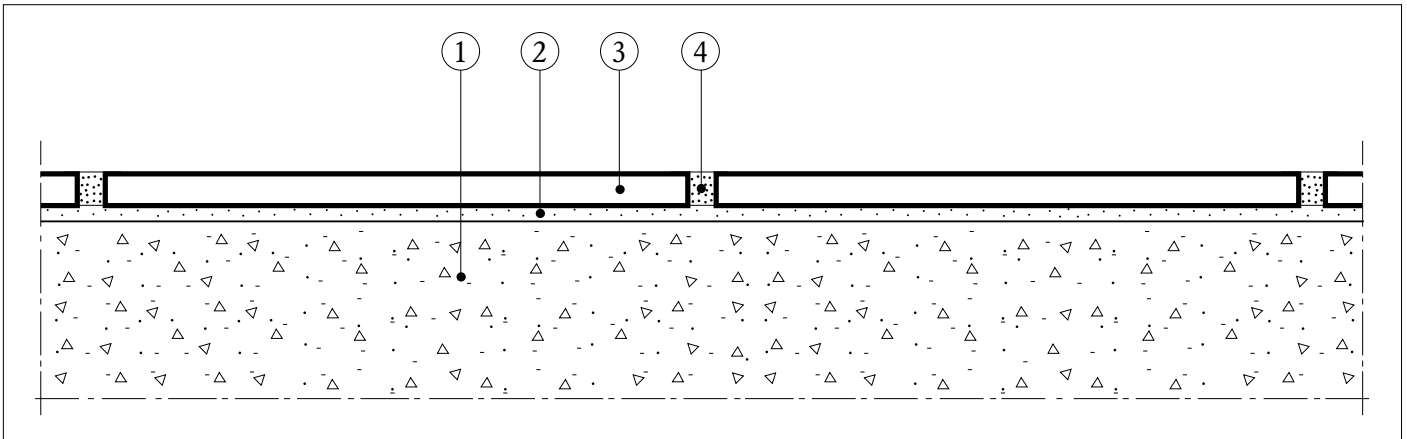
Applications

The G4 floor should normally be used only in applications that are exposed to minor variations in temperature and moisture and where there is no risk of exposure to chemicals. The concrete sub-floor should not have any long-term deformations as a result of shrinkage. Normally applications consist of floors directly on ground, entrances, toilettes, staircases and also new floors on old concrete, where mechanical stress is limited to pedestrian traffic or

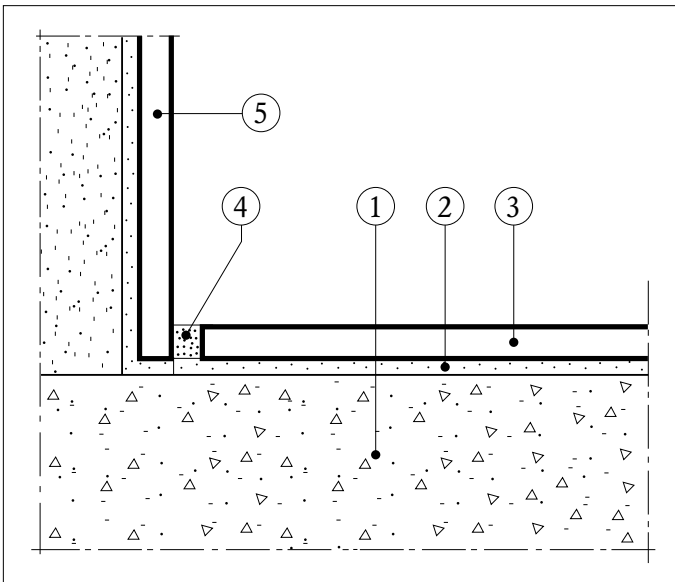
light trolleys with soft wheels.

The G 4 floor with FästBruk FB 1000 could together with CC Höganäs industrial tiles (thickness 14-20 mm) be used for floors which are subjected to heavy static and dynamic loads, and when tiling with large size tiles.

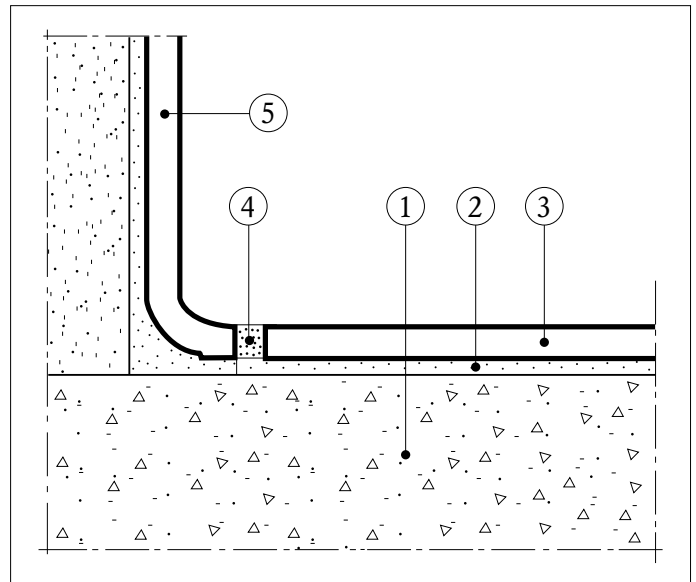
Design



Typical cross-section..



Cross-section through wall with straight skirting tiles.



Cross-section through wall with cove skirting tiles.

Legend

- | | |
|----------------|--------------|
| 1. Sub-floor | 4. Joints |
| 2. Adhesive | 5. Skirtings |
| 3. Floor tiles | |

1. Sub-floor

The sub-floor should consist of concrete with a surface that has been smoothed off with a float, or lightweight concrete with an even surface. There should be no pools of water on the surface, which should be cleaned thoroughly before starting work. Variations in height should be levelled off.

When using FB 13, FB 14 and FB 1000 the concrete surface should be at least 3 months old.

When using FB 12 the concrete surface should be at least 12 months old.

2. Adhesive

CC Höganäs Fix FB 12, RotFix FB 13 or SnabbRotFix FB 14.

When tiling large size tiles $\geq 250 \times 250$ mm the back of the tile must be coated with a thin but fully covering layer of the adhesive prior to the tile being pressed or knocked into the previously applied adhesive (the so called buttering/floating method).

CC Höganäs FästBruk FB 1000 for bonding ceramic tiles, natural stone, large-size tiles or very densely sintered tiles to floors. Not suitable for thin glazed tiles or mosaics.

FB 1000 could together with CC Höganäs industrial tiles be used for floors which are subjected to heavy static and dynamic loads, and when tiling with large size tiles.

3. Floor tiles

Ceramic tiles. Quality and thickness are to be chosen according to the floor loading. Floor tiles for floor heating should have a waterabsorption $E \leq 6\%$.

4. Joints

CC Höganäs Clinker Grouting for clinker tiles and natural stone.
CC Höganäs Grouting for ceramic tiles and polished natural stone.

5. Skirtings

Coved skirting tiles, floor tiles or wall tiles.